

Super Brown Futures

196BS169 Elm Park Kieshavn **COGNAC** ET



Cognac

Reg. #193672
aAa: 6 Style, 1 Dairy, 5 Smooth
Kappa Casein: BB
Born: July 19, 1999

Bred by: Elm Park Farms
Sheboygan Falls, WI

Sire Forest Lawn Simon Jupiter ET E90
Dam R Hart CD Clar ET 2E93 EEEEE
6-10 2x 305D 29840M 4.3% 1290F **3.6% 1066P**
365D 34680M 4.3% 1476F **3.6% 1239P**

MGS K Top Acres Dotson ET E90
MGD Gentle Breeze Mat Christine*TW 3E90 EEEE
6-02 2x 365D 30890M 4.4% 1360F **3.4% 1060P**
7-11 2x 365D 33190M 4.2% 1398F **3.3% 1105P**

- **Jupiter x Dotson x Matthew**
- **Cognac Represents The Perfect Mating!**



Clar- dam of Cognac

151BS173 Blessing Coll **AVALANCHE** ET



Avalanche

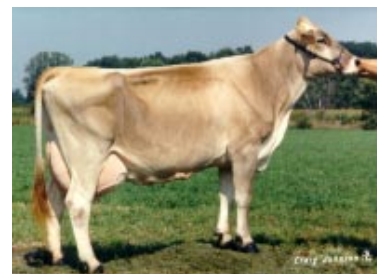
Reg. #193921
aAa: 2 Tall, 1 Dairy, 6 Style
Born: April 19, 1999

Bred by: Blessing Farms
Fort Wayne, IN

Sire R Hart BC Collection E93
Dam Blessing Jetway Ava 2E92 EEEVE
4-07 2x 305D 33580M 4.1% 1371F **3.5% 1162P**
365D 39620M 4.1% 1608F **3.6% 1412P**

MGS Forest Lawn Simon Jetway ET (M) E90
MGD Blessing Ensign Lady (W*) 3E90 EEEEE
3-08 2x 365D 27630M 3.9% 1075F **3.6% 1006P**
7-00 2x 365D 30060M 4.0% 1189F **3.6% 1086P**

- **Collection x Jetway x Ensign**
- **Avalanche Calves Are Impressive!**



Ava, dam of Avalanche

151BS177 Elm Park Keitz **CAMPO** ET



Campo

Reg. #193913
aAa: 2 Tall, 4 Strong, 6 Style
Born: August 24, 1999

Bred by: Elm Park Farms
Sheboygan Falls, WI

Sire Gearing's Patrick Camelot V89
Dam R Hart CD Clar ET 2E93 EEEEE
6-10 2x 305D 29840M 4.3% 1290F **3.6% 1066P**
365D 34680M 4.3% 1476F **3.6% 1239P**

MGS K Top Acres Dotson ET E90
MGD Gentle Breeze Mat Christine*TW 3E90 EEEE
6-02 2x 365D 30890M 4.4% 1360F **3.4% 1060P**
7-11 2x 365D 33190M 4.2% 1398F **3.3% 1105P**

- **Camelot x Dotson x Matthew**
- **Concentrated Breeding Power!**



Clar, dam of Campo

151BS178 Genesis **VERSACE** ET



Versace

Reg. #193742
aAa: 4 Strong, 3 Open, 2 Tall
Born: July 16, 1999

Bred by: Genesis Farms
Freeport, IL

Sire R Hart BC Collection E93
Dam Genesis Even Victoria ET E91 EEEVE
2-04 3x 305D 21420M 4.0% 863F **3.6% 771P**
365D 26080M 4.1% 1047F **3.7% 959P**

MGS Victory Acres Simon Even ET V88
MGD Genesis Preston Veronica 2E90 EEEVE
3-02 3x 305D 23970M 3.3% 799F **3.5% 847P**
365D 27490M 3.3% 916F **3.6% 984P**

- **Collection x Even x Preston**
- **Generations of Excellence!**



Victoria, Dam of Versace



Order Today! Call 1.800.525.2953